

## TYPE 12 PAINTED FREE STANDING DOUBLE DOOR ENCLOSURES

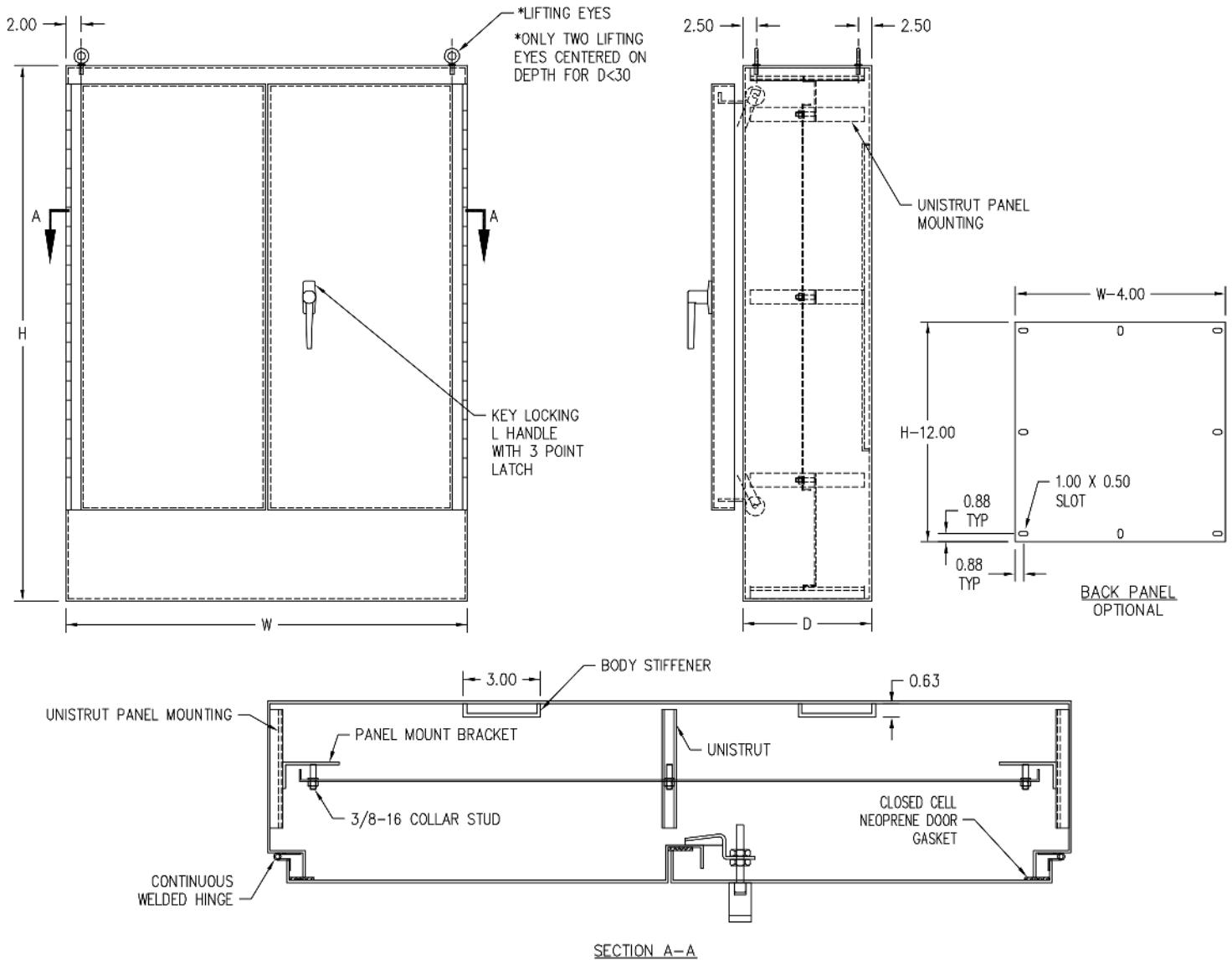


**Construction:** C & I Enclosures Type 12 Painted Free Standing Double Door Enclosures are fabricated in accordance with U.L. specifications from code gauge material. An oil resistant gasket is attached to the doors. The enclosures are provided with continuous hinges. The enclosures have overlapping doors which eliminate the need for a centerpost. A three point latch is provided which incorporates roller arms to hold the doors securely closed. Each enclosure is provided with lifting eyes for easy handling. All seams are continuously welded and ground smooth. Collar studs or uni-strut are provided for mounting optional panels.

**Finish:** C & I Enclosures Type 12 Painted Free Standing Double Door Enclosures are provided with an ANSI 61 gray polyester powdercoating inside and out over paint grip galvanized steel.

Enclosure Size HxWxD	Catalog Number	Weight	Panel
72x48x18	I-724818FSDT12	500	CI-7248FDP
72x60x18	I-726018FSDT12	568	CI-7260FDP
72x72x18	I-727218FSDT12	645	CI-7272FDP
90x72x20	I-907220FSDT12	781	CI-9072FDP
72x48x24	I-724824FSDT12	560	CI-7248FDP
72x60x24	I-726024FSDT12	645	CI-7260FDP
72x72x24	I-727224FSDT12	695	CI-7272FDP
90x72x24	I-907224FSDT12	825	CI-9072FDP
72x60x36	I-726036FSDT12	750	CI-7260FDP
90x72x36	I-907236FSDT12	1000	CI-9072FDP

# TYPE 12 PAINTED FREE STANDING DOUBLE DOOR ENCLOSURES



COMPLETE DETAILS AVAILABLE ON OUR WEB SITE