

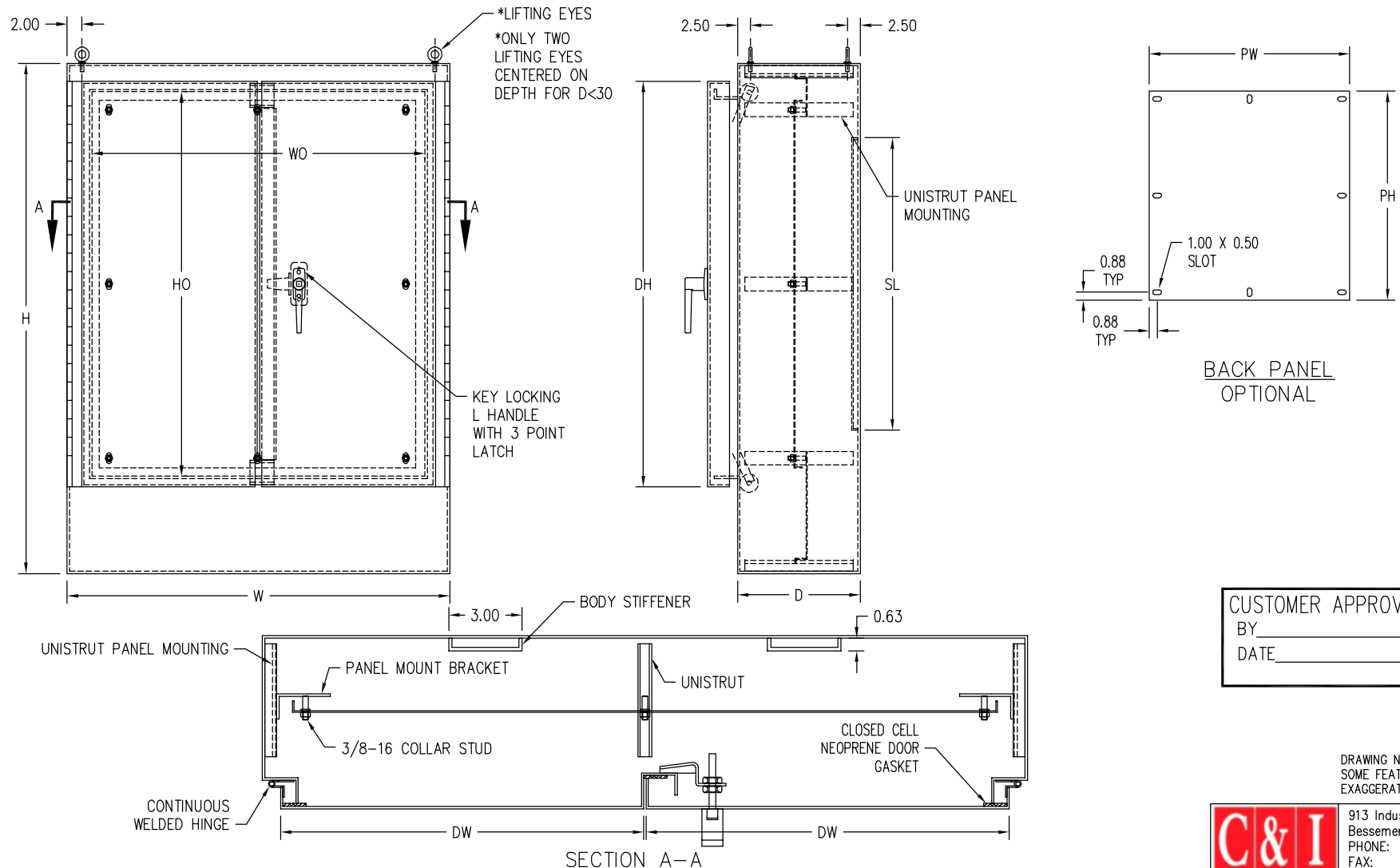
# TYPE 12 PAINTED FREE STANDING DOUBLE DOOR ENCLOSURES

## CONSTRUCTION:

C & I ENCLOSURES TYPE 12 PAINTED FREE STANDING DOUBLE DOOR ENCLOSURES ARE FABRICATED IN ACCORDANCE WITH U.L. SPECIFICATIONS FROM CODE GAUGE MATERIAL. AN OIL RESISTANT GASKET IS ATTACHED TO THE DOORS. THE ENCLOSURES ARE PROVIDED WITH CONTINUOUS HINGES. THE ENCLOSURES HAVE OVERLAPPING DOORS WHICH ELIMINATE THE NEED FOR A CENTERPOST. A THREE POINT LATCH IS PROVIDED WHICH INCORPORATES ROLLER ARMS TO HOLD THE DOORS SECURELY CLOSED. EACH ENCLOSURE IS PROVIDED WITH LIFTING EYES FOR EASY HANDLING. ALL SEAMS ARE CONTINUOUSLY WELDED AND GROUND SMOOTH. COLLAR STUDS OR UNI-STRUT ARE PROVIDED FOR MOUNTING OPTIONAL PANELS.

## FINISH:

C & I ENCLOSURES TYPE 12 PAINTED FREE STANDING DOUBLE DOOR ENCLOSURES ARE PROVIDED WITH AN ANSI 61 GRAY POLYESTER POWDERCOATING INSIDE AND OUT OVER PAINT GRIP GALVANIZED STEEL.



CUSTOMER APPROVAL  
BY \_\_\_\_\_  
DATE \_\_\_\_\_

DRAWING NOT TO SCALE  
SOME FEATURES  
EXAGGERATED FOR CLARITY



913 Industrial Park Cir.  
Bessemer, AL 35022  
PHONE: 205.424.4855  
FAX: 205.424.4858  
www.cienlosures.com



## TYPE 12 PAINTED FREE STANDING DOUBLE DOOR ENCLOSURES

Part No	Enclosure Dimensions					Door		Stiffener	Mat'l	Panel	
	Nominal			Opening							
	H	W	D	HO	WO	DH	DW	SL	Gauge	PH	PW
I-724818FSDT12	72.00	48.00	18.00	61.24	44.76	62.86	23.13	56.00	12	60.00	44.00
I-726018FSDT12	72.00	60.00	18.00	61.24	56.76	62.86	29.13	56.00	12	60.00	56.00
I-727218FSDT12	72.00	72.00	18.00	61.24	68.76	62.86	35.13	56.00	12	60.00	68.00
I-907220FSDT12	90.00	72.00	20.00	79.24	68.76	80.86	35.13	74.00	12	78.00	68.00
I-724824FSDT12	72.00	48.00	24.00	61.24	44.76	62.86	23.13	56.00	12	60.00	44.00
I-726024FSDT12	72.00	60.00	24.00	61.24	56.76	62.86	29.13	56.00	12	60.00	56.00
I-727224FSDT12	72.00	72.00	24.00	61.24	68.76	62.86	35.13	56.00	12	60.00	68.00
I-907224FSDT12	90.00	72.00	24.00	79.24	68.76	80.86	35.13	74.00	12	78.00	68.00
I-726036FSDT12	72.00	60.00	36.00	61.24	56.76	62.86	29.13	56.00	12	60.00	56.00
I-907236FSDT12	90.00	72.00	36.00	79.24	68.76	80.86	35.13	74.00	12	78.00	68.00