

TYPE 12 SLIM-LINE PUSHBUTTON ENCLOSURES

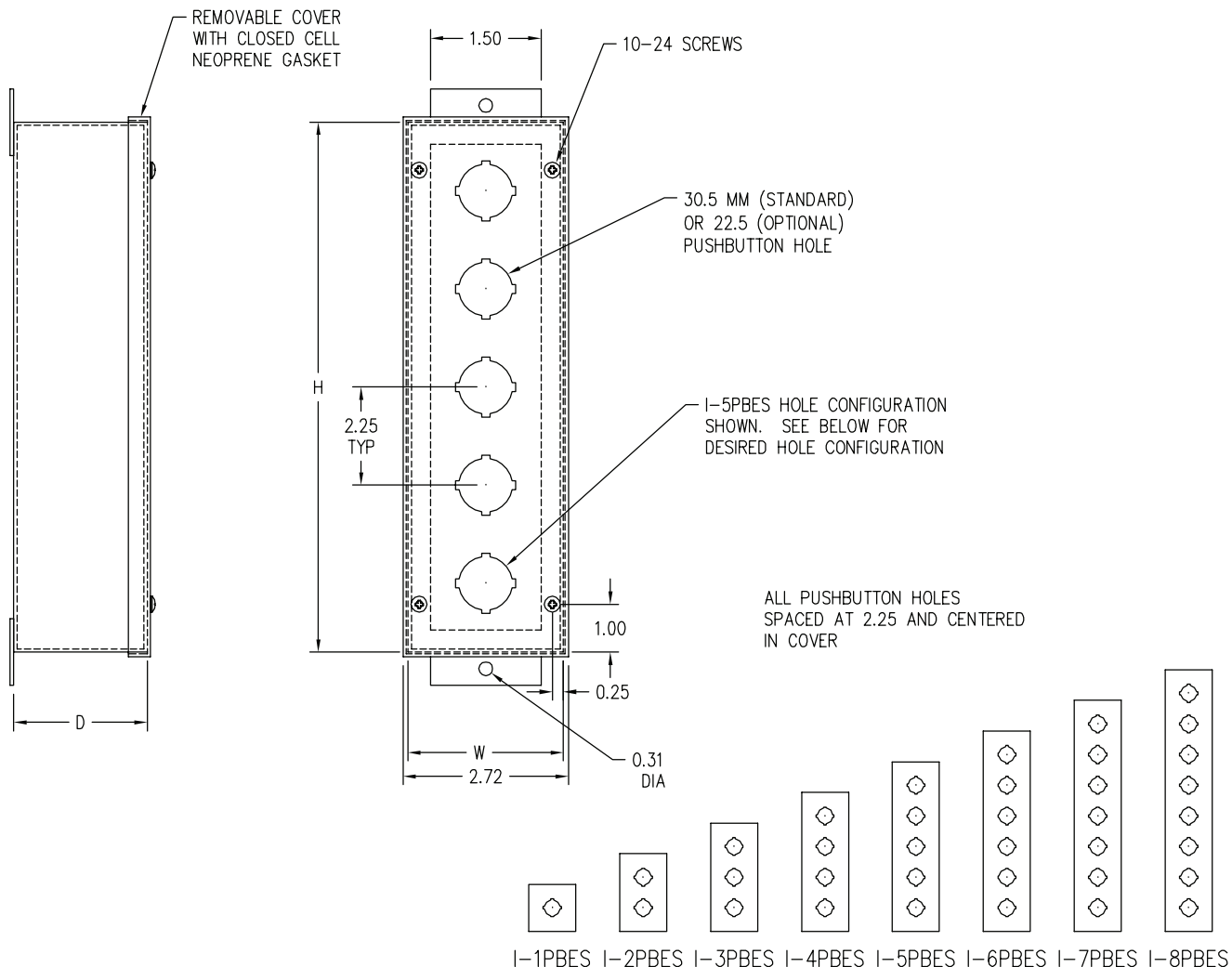


Construction: C & I Enclosures Type 12 Slim-Line Pushbutton Enclosures are fabricated in accordance with UL specifications from code gauge steel. An oil resistant gasket is attached to the cover to prevent dust intrusion. All seams are continuously welded and ground smooth.

Finish: C & I Enclosures Type 12 Slim-Line Pushbutton Enclosures are provided with an ANSI 61 gray polyester powdercoating inside and out over paint grip galvanized steel.

Note: For small diameter pushbutton hole change suffix to **PBESM**.

Enclosure Size HxWxD	Catalog Number	Weight
3.88x2.5x2.38	I-1PBES	1
6.13x2.5x2.38	I-2PBES	2
8.38x2.5x2.38	I-3PBES	2
10.63x2.5x2.38	I-4PBES	3
12.88x2.5x2.38	I-5PBES	3
15.13x2.5x2.38	I-6PBES	4
18.38x2.5x2.38	I-7PBES	4
20.63x2.5x2.38	I-8PBES	8



COMPLETE DETAILS AVAILABLE ON OUR WEB SITE