

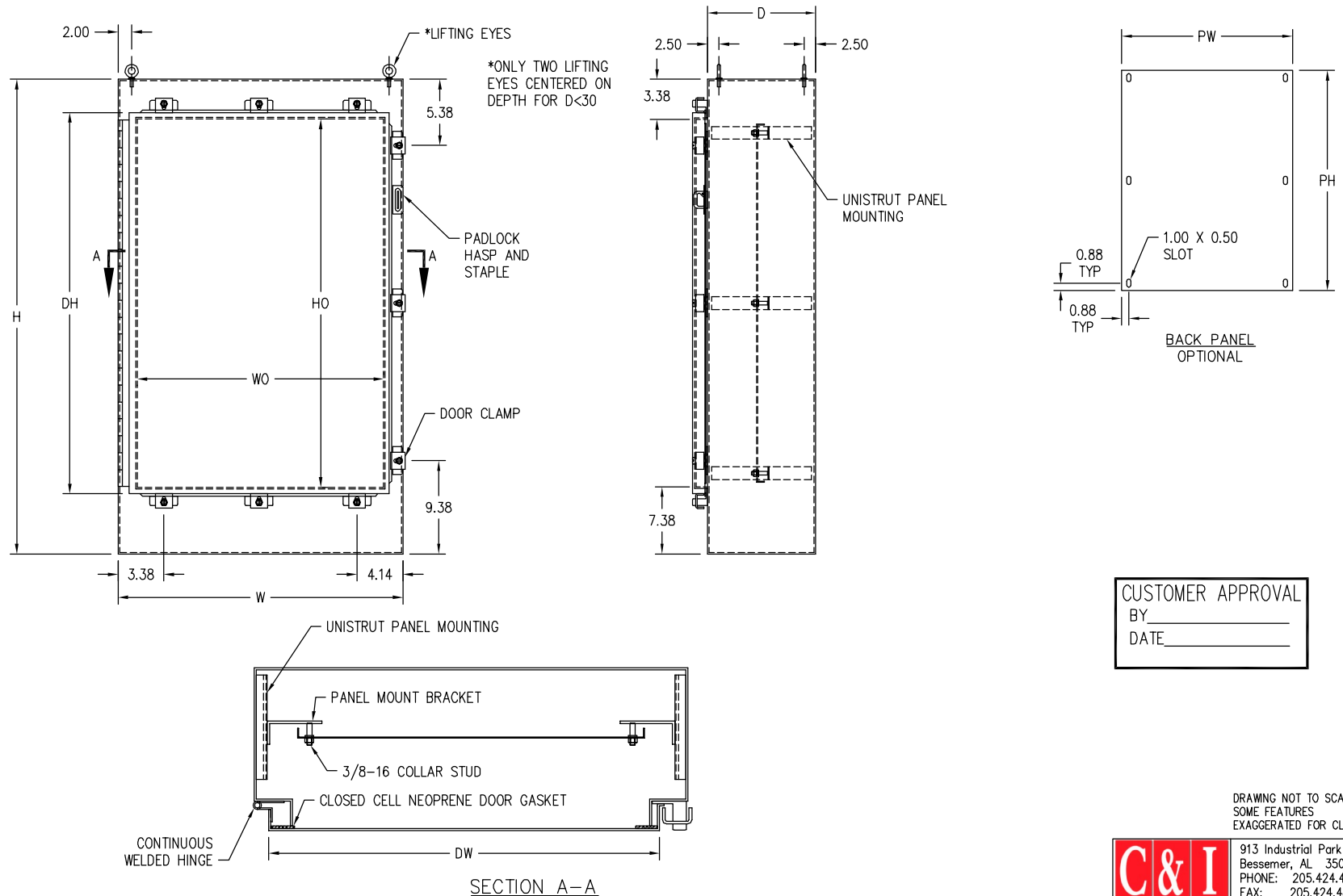
TYPE 4 PAINTED FREE STANDING SINGLE DOOR ENCLOSURES

CONSTRUCTION:

C & I ENCLOSURES TYPE 4 PAINTED FREE STANDING SINGLE DOOR ENCLOSURES ARE FABRICATED IN ACCORDANCE WITH U.L. SPECIFICATIONS FROM CODE GAUGE TYPE MATERIAL. A ROLLED LIP IS PROVIDED AROUND THREE SIDES OF EACH DOOR AND ALONG THE TOP OF THE ENCLOSURE OPENING TO EXCLUDE LIQUIDS AND CONTAMINANTS. AN OIL RESISTANT GASKET IS ATTACHED TO THE DOOR. THE ENCLOSURES ARE PROVIDED WITH CONTINUOUS HINGES AND DOOR CLAMPS ON THREE SIDES OF DOOR TO INSURE A WATERTIGHT SEAL. A HASP AND STAPLE ARE PROVIDED FOR PADLOCKING. EACH ENCLOSURE IS PROVIDED WITH LIFTING EYES FOR EASY HANDLING. ALL SEAMS ARE CONTINUOUSLY WELDED AND GROUND SMOOTH. COLLAR STUDS OR UNI-STRUT IS PROVIDED FOR MOUNTING OPTIONAL PANELS.

FINISH:

C & I ENCLOSURES TYPE 4 PAINTED FREE
STANDING SINGLE DOOR ENCLOSURES ARE
PROVIDED WITH AN ANSI 61 GRAY
POLYESTER POWDERCOATING INSIDE AND
OUT OVER PAINT GRIP GALVANIZED STEEL.



DRAWING NOT TO SCALE
SOME FEATURES
EXAGGERATED FOR CLARITY



913 Industrial Park Cir.
Bessemer, AL 35022
PHONE: 205.424.4855
FAX: 205.424.4858
www.ciencllosures.com



TYPE 4 PAINTED FREE STANDING SINGLE DOOR ENCLOSURES

Part No	Enclosure Dimensions					Door		Mat'l Gauge	Door Clamp Count		Panel	
	Nominal			Opening								
	H	W	D	HO	WO	DH	DW		Vert	Horiz	PH	PW
I-722518	72.00	25.00	18.00	61.24	21.00	63.08	22.62	12	5	3	60.00	20.00
I-723124	72.00	31.00	24.00	61.24	27.00	63.08	28.62	12	5	3	60.00	26.00
I-723724	72.00	37.00	24.00	61.24	33.00	63.08	34.62	12	5	3	60.00	32.00
I-723730	72.00	37.00	30.00	61.24	33.00	63.08	34.62	12	5	3	60.00	32.00